

# Risk Management Meets Open Source



Markus Stricker

Intuitive Collaboration



commercial, vertical people source

solution

Early 1990s:



were a major driver  
of dynamic web sites

2004: - Mozilla Foundation releases Firefox

2005: - Gartner Group identifies Open Source as top IT-trend  
- Google startet Open Source project Google Code  
- IBM donates 500 patents for Open Source usage

2006: - Sun releases Java under Open Source licence  
- Oracle buys Open Source company for embedded DB

Q1/2008:- 20 Open Source vendor deals raise \$200 mio. venture capital



These and many more are here to stay

- Share what can be shared
- A community is stronger than an individual person or company
- Transparently communicate goals and achievements

„The real magic is the community process – it has nothing to do with software.“

Bill Hilf

Microsoft's general manager for competitive strategy

„The participation age is about the people at the edges of the network telling the center what is going on .“

Jonathan Schwartz

CEO Sun Microsystems

- Community members - individuals or companies – decide themselves on
  - the level of their involvement
  - which functions they can assume
- Extremely meritocratic
- Peer-based: Roles and functions, not hierarchies
- Not invented here is very welcome

- There exist many different Open Source licenses
- All grant
  - Free access to the work products
  - Copyright the work products
- Two groups: „viral“ and „non-viral“ licenses

PillarOne is licensed under the strongest viral license, the GNU General Public License (GPL v3).

Vertical software solutions focus on an industry

PillarOne is

- A community of actuarial and risk management professionals
- An enterprise software platform to build and run risk, rating and reserving applications

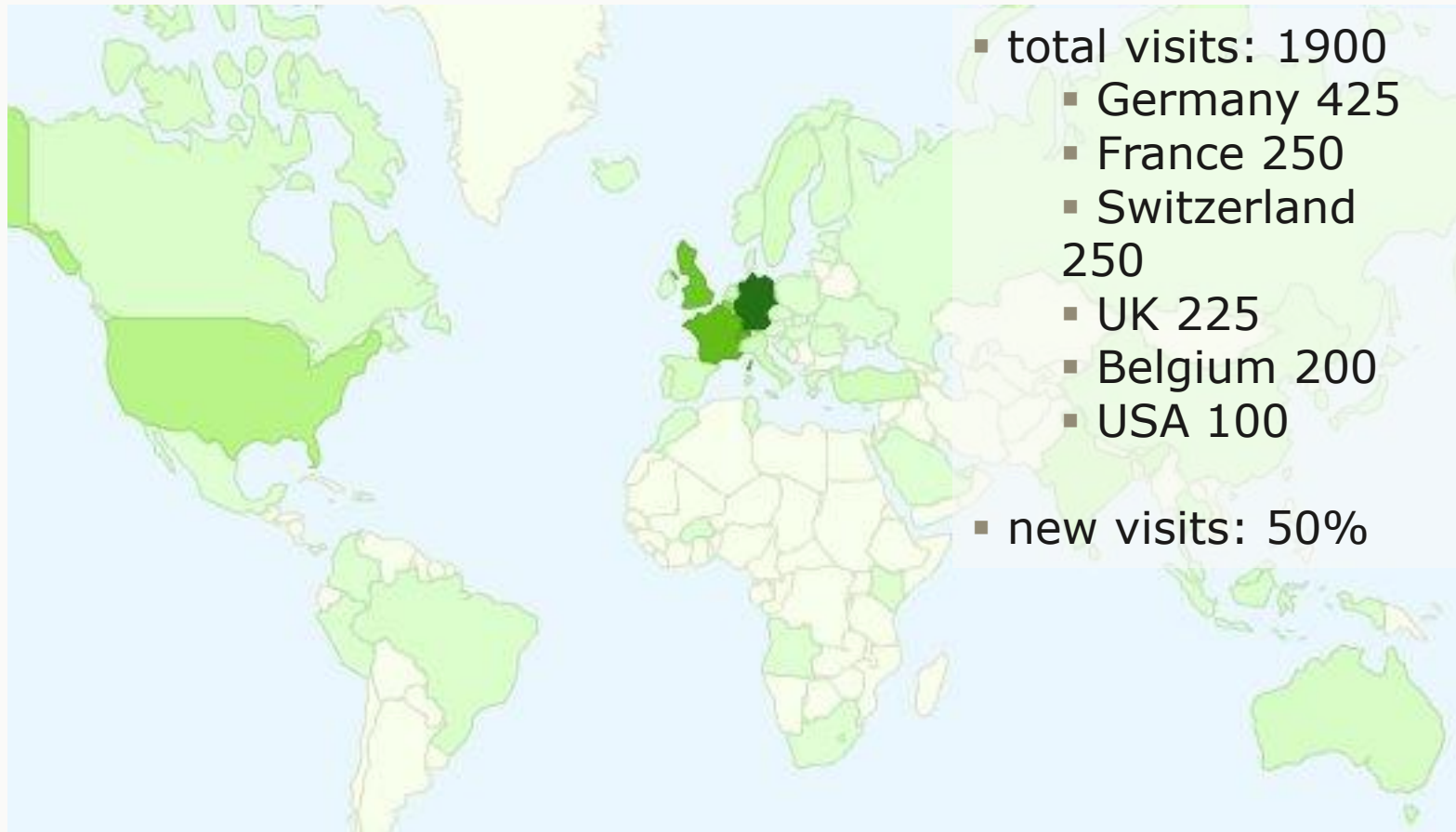


- Open Source encourages an ecosystem of professional service providers
  - Training
  - Model building
  - Integration
  - Scaling
  - Maintenance
- No vendor lock-in

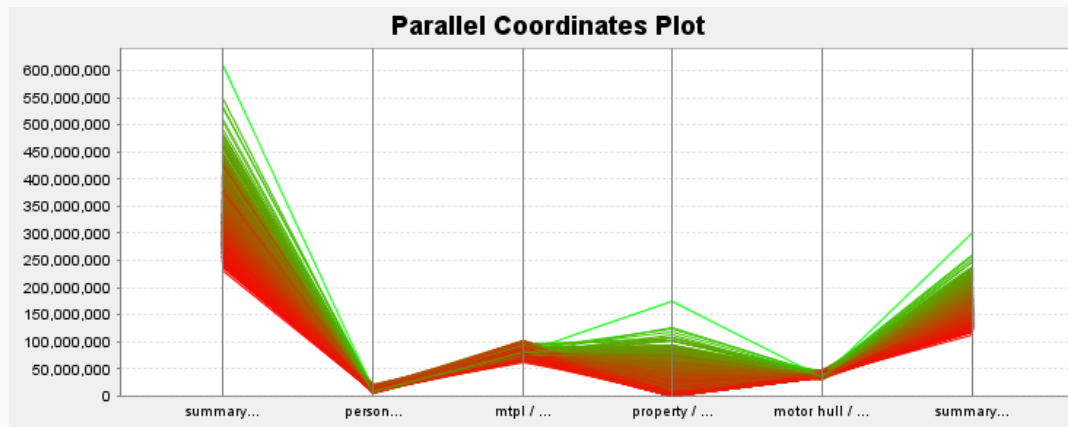


EU economic impact study of Open Source: 32% of all IT services in 2010 will be open source related services.

## PillarOne.org website traffic in March 2009



- Jan 2008: PillarOne core team is formed and starts to implement basic platform features
- Mai 2008: First, small reserving application is shown to demonstrate the capabilities of the platform
- October 2008: Non-life modeling tool RiskAnalytics v0.1 is shown
- April 2009: RiskAnalytics v0.3



From zero to multi-user, client-server actuarial workbench in 15 months.